

Circular Scrapers

MANOWAR



- Long durability
- Without corrosion
- Without maintenance
- Complete reliability
- Less consumption
- Self-levelling shovels
- **Total removal of the sludge**



**Tecno
converting**
PERFECCIONAMOS EL MEDIO AMBIENTE

Circular scrapers **BTEC MANOWAR**

The technology of circular scrapers had not moved forward until now. The same kind of bridge scraper to collect mud and sludge went on manufacturing with the usual problems of corrosion and maintenance.

With the BTEC models are all the flaws from the older models totally corrected. Even though the function is the same, the design of the scraper completely changes from the older models. Starting from a traction system anchored on the edge of the settling tank, the customer no longer observes a spinning bridge, but two shovels that are self-levelled depending on the water level.

EVOLUTION OF THE SCRAPER :

- **Old models:**
Corrosion.
Maintenance.
Huge problems with the sludge.
Problems with the concrete.



- **MANOWAR model, with self-levelling shovels without covering.**

- **Total covering of the settling tanks in order to eliminate bad smell problems and improve the image of the plant.**
- **Possibility to incorporate lamellar packets.**



¡Do not make a mistake, choose BTEC!

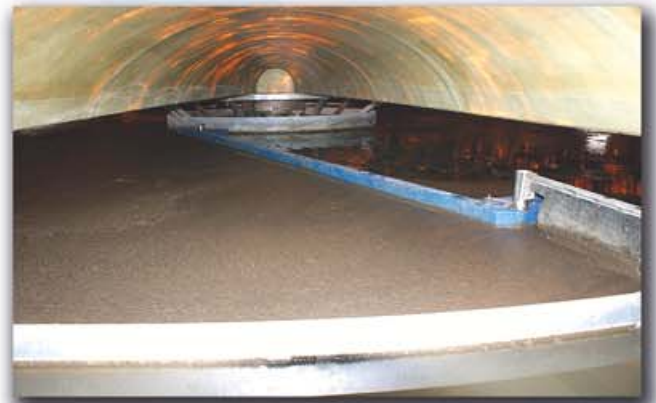
Circular scrapers **BTEC MANOWAR**

ADVANTAGES OF THE BTEC MODELS :

- Corrosion is totally removed because the scrapers are built with stainless steel and thermoplastic materials.
- Without maintenance.
- Possibility to include lamellars for future plant enlargement.
- Unique **SELF-LEVELLING** system to collect sludge.



BTEC SYSTEM TO COLLECT SLUDGE:



BTEC MANOWAR TECHNICAL DATA:



The patented traction system of the BTEC models guarantees total stability in the rotation of the bearing ring thanks to the 3 driving gears.



The bearing ring slides along self-adjustable support guides.



¡Do not make a mistake, choose BTEC!

The development of the BTEC models is based on the constant innovation and the use of new components to offer the best performance qualities in our equipments.

Tecnoconverting together with the Centro Tecnológico (CTM) develop new technologies in the water treatment area.



El Centro Tecnológico de Manresa participa con BTEC.

BTEC® stands for innovation